



BY APPOINTMENT TO  
H.R.H. THE DUKE OF EDINBURGH  
JAMES PURDEY & SONS LTD  
GUN MAKERS  
LONDON



BY APPOINTMENT TO  
HER MAJESTY QUEEN ELIZABETH II  
JAMES PURDEY & SONS LTD  
GUN & CARTRIDGE MAKERS  
LONDON



BY APPOINTMENT TO  
H.R.H. THE PRINCE OF WALES  
JAMES PURDEY & SONS LTD  
GUN & CARTRIDGE MAKERS  
LONDON

# PURDEY

*Gun & Rifle Makers*

**JAMES PURDEY & SONS LTD**  
(INCORPORATING JAMES WOODWARD & SONS)

AUDLEY HOUSE, 57-58 SOUTH AUDLEY STREET, LONDON W1K 2ED

GUN CATALOGUE



# INDEX



PURDEY, ONLY THE BEST  
page 1

FACTORY & TRAINING  
page 2

GUN BUILDING  
pages 3-6

GUNS  
pages 7-11

GUN CASES & ACCESSORIES  
page 12

ENGRAVING  
pages 13-14

CHARTS & ORDERING  
page 15

PURDEY

*'A tradition of supplying the very finest...'*





# PURDEY, ONLY THE BEST



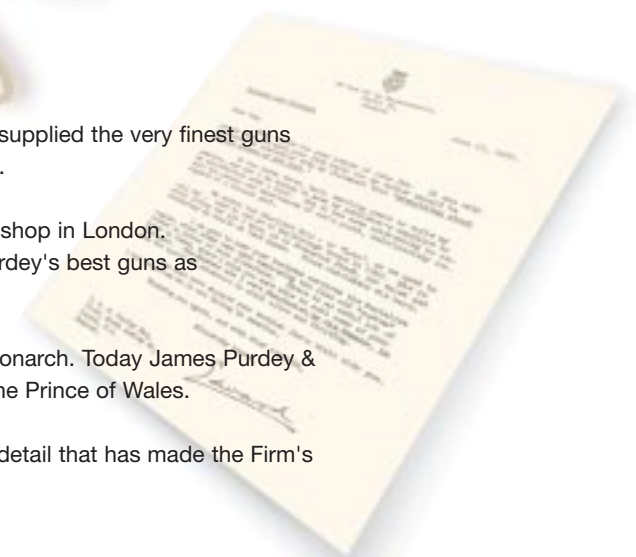
**JAMES PURDEY & SONS,**  
**GUN & RIFLE MANUFACTURERS**  
31 & 32 OXFORD STREET  
LONDON

Founded in 1814, the year before The Battle of Waterloo, James Purdey & Sons have for nearly two centuries supplied the very finest guns and accessories to some of the world's most distinguished and discerning people.

By 1828, James Purdey's establishment in Oxford Street was recognised as the most famous gunshop in London. Royal patronage followed. As early as 1838 Queen Victoria is recorded as having bought a pair of Purdey's best guns as well as various accessories.

Indeed the firm was granted its first Royal Warrant by Queen Victoria, an honour granted by each succeeding monarch. Today James Purdey & Sons holds the Warrants of Her Majesty Queen Elizabeth II, HRH The Duke of Edinburgh and HRH the Prince of Wales.

As you will see in the following pages, Purdey guns are still made with the same eye for quality and attention to detail that has made the Firm's products world famous for the better part of these past two centuries.



# FACTORY & TRAINING

When you take delivery of your new gun from us, you can be assured it is every bit a Purdey.

Every part of a Purdey is machined and then hand-worked and finished in our factory in West London. Only the highest quality materials are used, with all load bearing parts being made from certified forgings.

Our Walnut Wood is sourced in Turkey to give the best grain through the hand, together with the finest colour and contrast.



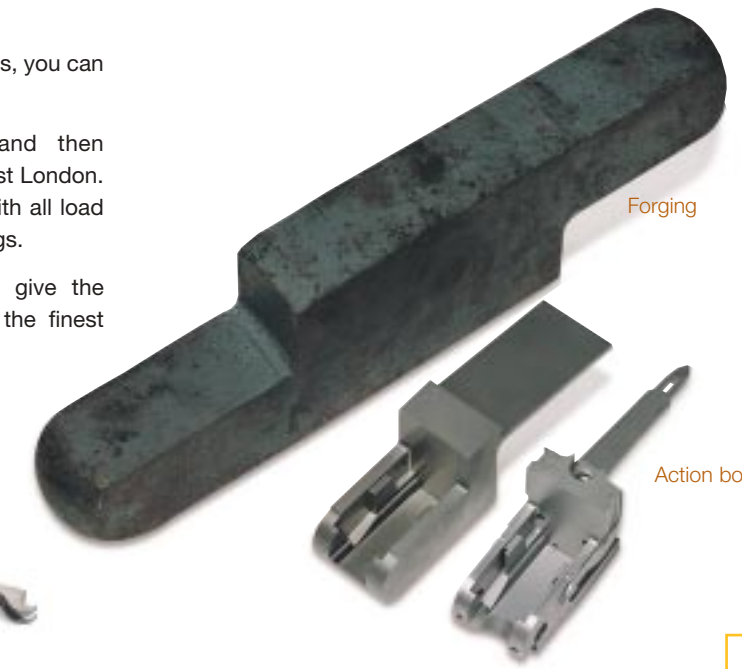
**Craftsmanship bred of the finest training**  
The transformation from raw materials to finely balanced sporting gun is brought about using the skills of the most highly trained craftsmen.

At Purdey, these skills are handed down from generation to generation through traditional apprenticeship, always master to apprentice.

Apprenticeships commence at 16 and last for five years.

At 21, a craftsman emerges, fully trained in one of the individual skills that goes towards the making of a Purdey gun: barrel making, action making, lock & trigger (furniture) making, ejector making, stock making, engraving and finally, finishing.

Once trained the individual craftsman is entitled to stamp his initials on the part of the gun he creates.



Forging

Action body

**All round skills that add to the finished piece**  
Each process in fine gunmaking has an impact on the shaping, fit and balance of the whole.



CAD-CAM

E.D.M. Technology



## TECHNOLOGY THAT COMPLEMENTS HAND CRAFTSMANSHIP

The bespoke, hand made and hand finished feel and appearance of each Purdey gun is today as fine as ever.

The Company has embraced the latest CAD/CAM and CNC technology to support its craftsmen in the pursuit of excellence.

*'We use technology to supply our craft base with basic parts machined to the finest tolerances, enabling us to produce the best quality guns, with maximum added value for our customers in terms of finish and fit.'*

Component parts of unrivalled accuracy, machined to tolerances of less than one thousandth of an inch, are delivered to the craftsman's bench, enabling us to produce the best quality guns, with maximum added value for our customers in terms of hand finish and hand fit.

No two Purdey guns are exactly alike - unless they are part of a matched set. Each is bespoke, different in many details. So it is desirable that each craftsman has a feel for the gun as a whole, and how his work affects and is affected by the other parts.





# GUN BUILDING BARRELS & CHOKING



### Chopper Lump Barrels

All Purdey barrels, both SxS and O/U, are of chopper lump construction.

Each individual tube is hand filed and then "struck up" using striking files. This gives the tube the correct Purdey profile with wall thickness tolerance of .001". Dependant on the final weight of the gun wall thicknesses are recommended at, and made to, .032".

Once polished the individual tubes are jointed (joined at the breech) using silver solder, the loop iron is similarly fixed. Once together the rough chokes can be cut and the internal bores finished using a traditional lead lapping technique.

### Safety & Proof

The safety of our customers is, of course, paramount. All Purdey barrel tubes are made from certified forgings with wall thickness dimensions that give a safety factor of a higher level than that demanded by the Gun Barrel Proof Act. All Purdeys are proofed in London and are to Magnum proof pressure (1200 Bar) unless otherwise specified.

### Chokes

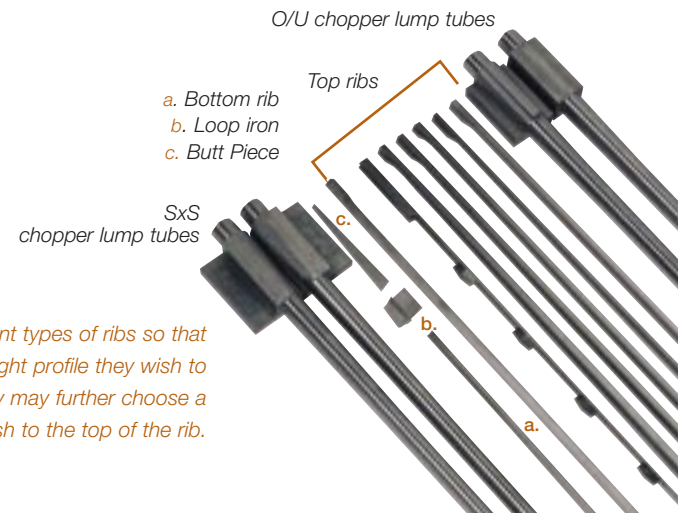
Having been rough cut initially, before final finishing, chokes are regulated by hand to conform to within one per cent of the choking specification as defined opposite.

Please note that new guns are made with enhanced wall thicknesses at the nose end, to accommodate the use of steel shot. Purdeys will advise in each case the chokes that are appropriate for use with steel.

### Ribs

Ribs - always designed to provide the sighting profile the shooter wishes to see - are hand filed to suit the barrel contour exactly, and then soft-soldered (using tin) to the barrels, using pine resin as the fluxing agent. The use of pine resin provides extra water resistance to the surfaces enclosed by the ribs.

Purdey's have different profiles of ribs to provide shooters with their preferred sight profile - with a choice of up to six rib profiles for SxS guns and three for O/U guns.



*Purdeys have different types of ribs so that customers may specify the sight profile they wish to see when shooting. They may further choose a matted or file cut finish to the top of the rib.*



# GUN BUILDING



## ACTION MAKING

The Purdey side by side action patented in 1880 is still made now with only very minor changes. The action mechanism, designed by Frederick Beesley, retains a portion of the energy in the mainsprings to facilitate the opening of the gun - "an inherent easy opener!"

The over-under is derived from the Woodward, patented in 1913.



Blacking the breech during jointing



Blacking down



Chiselling the detonating



Filing & polishing the detonating

'Detonating' the action is the process whereby the actioner chisels, files, forms and polishes the outside of the action to give the true Purdey shape. Customers can choose between square and rounded bar actions for both side-by-side and over-under guns.

Such is the Purdey dedication to absolute fit and finish, the customer can be assured that from the inside out, the gun is as perfect as is possible.

You will find further details of the Purdey side by side, over and under and double rifle actions on pages 7-10.

## LOCK MAKING



Side-by-Side interceptor seer lock. The famous Purdey easy opening lock mechanism.



Over & Under. A back action interceptor seer lock. Built on the Woodward patent acquired by Purdey in 1949. The mechanism has undergone little change since then.

DETAILS OF SHOT SIZES (nominal)					
ENGLISH	USA	DIAMETER		PELLETS	
		mm	in	per 10g	per oz
LG	-	9.1	.36	2	6
SG	00Buck	8.4	.33	3	8
Spec.SG	1Buck	7.6	.30	4	11
SSG	3Buck	6.8	.27	5 1/2	15
AAA	4Buck	5.2	.20	12 1/2	35
BB	Air Rifle	4.1	.16	25	70
1	2	3.6	.14	36	100
3	4	3.3	.13	50	140
4	5	3.1	.12	60	170
5	6	2.8	.11	78	220
6	-	2.6	.10	95	270
7	7 1/2	2.4	.095	120	340
7 1/2	8	2.3	.09	140	400
8	-	2.2	.085	160	450
9	9	2.0	.08	210	580

NUMBER OF PELLETS IN SHOT LOAD (nominal)							
g	oz	3	4	5	6	7	8
46	1 5/8	228	276	358	439	552	732
42.5	1 1/2	210	255	330	405	510	675
36	1 1/4	175	213	275	338	425	562
34	1 3/16	166	202	261	321	404	534
32	1 1/8	157	191	248	304	383	506
30	1 1/16	149	181	234	287	361	478
28.5	1	140	170	220	270	340	450
26.5	15/16	131	159	206	253	319	422
25	1/2	122	149	193	236	298	394
23	13/16	113	138	179	219	276	366
17.5	3/8	87	106	138	169	212	282
16	9/16	78	96	124	152	191	254
12.5	5/16	61	75	97	118	149	187
9	5/16	44	53	69	84	106	141

### REGULATION OF CHOKES

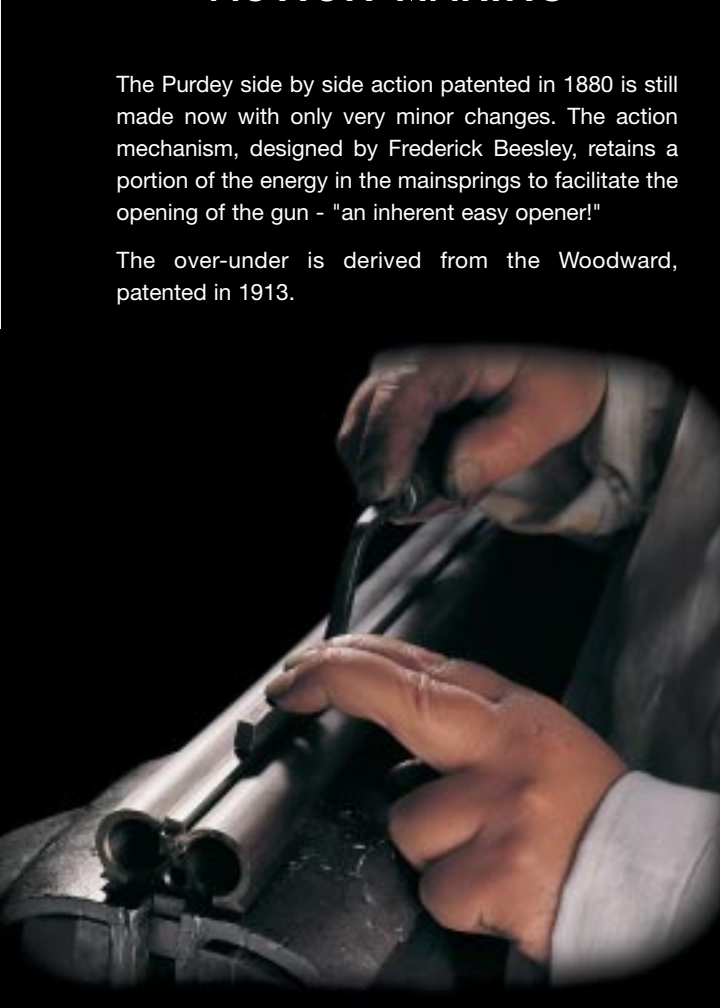
The standard for regulating and patterning the shooting of a gun, is the percentage of the shot charge, which is evenly concentrated in a circle of 30" (76.21cm) diameter at a range of 40 yards (36 metres).

12 BORE 2 3/4" 1 1/4 oz No.6		20 BORE 2 3/4"		THE PERCENTAGES OF CHOKE	
FULL CHOKE	.038 - .040	FULL CHOKE	.038 - .040	Cylinder	45%
CHOKE	.035	CHOKE	.030	Improved Cylinder	50%
.75(MOD)	.022	.75(MOD)	.018 - .019	1/4 Choke	55%
.5 CHOKE	.016 - .017	.5 CHOKE	.012 - .013	1/2 Choke	60%
.25 CHOKE	.010 - .011	.25 CHOKE	.007 - .008	3/4 or Modified choke	65%
IMP CYL	.007 - .008	IMP CYL	.006	Choke	70%
CYL	.003	CYL	.003	Full Choke	75%
SKEET	OPEN BORE	SKEET	OPEN BORE	Skeet (2)	45%
				Skeet (1)	40%

12 BORE 2 1/2" 1oz No.6		28 BORE 2 3/4"		THE CHOKE SECTION	
FULL CHOKE	.038 - .040	FULL CHOKE	.026		
CHOKE	.030	CHOKE	.020		
.75(MOD)	.018 - .019	.75(MOD)	.018		
.5 CHOKE	.012 - .013	.5 CHOKE	.015		
.25 CHOKE	.006 - .007	.25 CHOKE	.011		
IMP CYL	.003	IMP CYL	.007		
CYL	.002	CYL	.003		
SKEET	OPEN	SKEET	OPEN		

(Purdey choke restrictions 1/1000 inch.)

**'Our objective is to produce barrels which look beautiful, are perfectly shaped and outperform all the standard criteria for safety and accuracy.'**



Striking the rib

The action blocks for all guns are cut from certified forgings, for consistency of grain throughout, and are so fitted to the barrels as to give an absolute joint.

The actioner then fits the fore-part, the locks, the strikers and the safety work before finally detonating the action.



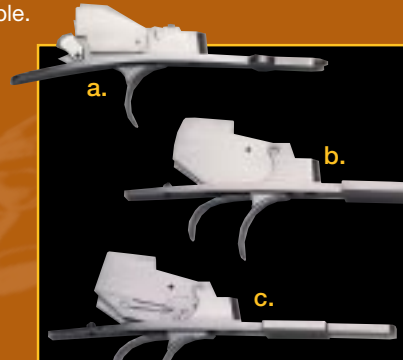


## GUN BUILDING

### TRIGGER MAKING

#### a. Single Trigger.

The Purdey single trigger works both by inertia and mechanically. It is simple, effective and fast. The firing sequence is fixed, therefore there is no barrel selection possible.



- a Single Trigger
- b Double Trigger
- c Spring Bladed Front Trigger

#### b & c Double triggers

The Standard double triggers (b) can be augmented with an articulated front trigger (c). This device alleviates damage to the back of the trigger finger on discharge of the second barrel.



### EJECTOR MAKING

#### Side-by-side

Apart from one minor change, when the cross bar on the knuckle of the action was removed and a central lifting arm substituted, the side-by-side ejector has remained as originally designed in 1880. It is a modified Southgate system, and can be relied upon for synchronised and powerful ejection.

#### Over-and-Under

Essentially the same as the Woodward ejector of 1949, (the latest modification), the system is renowned for its positive and strong ejection.

Regulating the Ejector on the Side by Side gun.

### STOCKING

Only the best quality walnut is used for stocking Purdey guns.

The wood, sourced in Turkey, is chosen primarily for its strength and for the straightness of the grain through the head and hand sections of the stock.

Walnut has a seemingly infinite variation of colour, contrast and pattern. With the importance of the stock to the overall look of the gun, Purdey's strive to offer only what is the best choice available in the world today.

Customers are advised to take advantage of the option to choose their preferred wood from the extensive stocks at Purdey's in South Audley Street.

Carrying the dimensions for cast, bend and length for proper fit to the individual our stockers orientate the stock in the blank to show the wood to its best advantage.



In "making off" (carving the final shape on to the stock), the classic Purdey stock shape is used and adapted to the customer's dimensions.

Once the stock is fully shaped, with the surface grain raised and then finely smoothed, the checkering is laid on and cut up by hand to 24 lines per inch.

Finally, before the butt end is shaped, the stocker will bore the stock out to give the optimum balance and weight to the gun.

Chequering the hand at 24 lines per inch



## GUN BUILDING

### ENGRAVING

Purdey offer a complete range of traditional scriver engraving from their standard fine rose and scroll through large scroll, with or without game scenes, to gold inlays and carving. Standard fine is the most commonly asked for and is inclusive in the price of the gun. Dating from the 1880's it is still based on the '600' lay out pattern created by Purdey.

Our engravers are well versed in the long tradition of standard fine engraving and remain true to the classic scroll shaping and shading techniques. Usually, standard fine guns are finished with colour case hardened actions produced using a traditional "crushed bone" pack hardening technique.

### FINISHING

#### Regulating

On arrival in the finishing shop, the gun, now completely made, requires regulating. The mechanical function so important to absolute reliability has to be built in. Cam and seer firing points are regulated to give absolute sequence of operation for trigger pulls, striking, opening, ejecting and closing, all the time with absolute safety.

Once the gun is regulated, it is taken and shot in the field, and otherwise tested thoroughly. At this stage, the precision of choke pattern and point of aim is checked and regulated.

#### Polishing

After regulating, the new Purdey is polished. The action is lacquered, the pins blued and parts, inside and out, polished and buffed to a mirror-like finish.

It is at this stage that the stock and forepart are polished, then burnished with leather, ready to have the Purdey Slakum finish applied. This is an oil finish, unique to Purdeys and is made up in house from linseed oil, beeswax and driers.



Scriver engraving (top)

Slakum finishing a stock (bottom)



*'When we finish a Purdey, our aim is to make*

*it beautiful, and to make it work beautifully...*

*for a hundred years and beyond'.*

The process of Slakum finishing a stock takes up to six weeks of daily application of slakum - and 'rubbing off'. This produces an extremely hard, durable and waterproof high gloss finish that is fixed in the wood itself, bringing out all its natural beauty.





## SIDE BY SIDE GAME GUN



### Purdey easy opening actions:

All side-by-side guns are built on the easy opening system invented by Frederick Beesley when he was working for Purdey. This system is incorporated in guns built from 1880 onwards.

### Dedicated action sizes:

Important to the overall weight and proportion of the gun is the action size. Purdey offers dedicated action sizes for each of the bores 10, 12, 20, 28 & .410 in square bar, round bar and ultra round bar shapes.

### Purpose-building:

On ordering we encourage our customers to tell us what the use of their gun will be. This will greatly influence the making of the gun to a particular weight and balance - for example an ultra round bar action on a 12 bore would render a three ounce weight advantage, whilst a third grip would add weight of up to one-and-a-half ounces.

### Chambers:

Our guns are generally chambered to 2 3/4". Chambers specified otherwise, i.e. at 2", 2 1/2" and 3" will reduce or increase weight accordingly.



Guns are available in 10 (*Side by side only*) 12, 16, 20, 28 and .410 bore.

### Rib Types:

The following rib types are available, with a choice of matted or file cut finish. Note that all ribs are suitably tapered to give an illusion of length when seen from the breech end.

Choice of rib is also a factor in the overall weight of the gun.

Ordinary game rib	concave	5/16", 12. 1/4", 16, 20, 28, .410
Ordinary game rib	flat top	"
Semi bottom	concave	"
Ventilated raised	flat top	"
USA Narrow	flat top	1/4" for all gauges
Churchill type	flat top	"



## OVER & UNDER GUN



The Over-Under gun is available in 12, 16, 20, 28 and .410, with each bore made on a dedicated action size. Actions are available in either conventional square bar, round bar or ultra round bar shape.

Again, as with Side-by-Sides, the shape of the action has an effect on the weight of the gun.

### Firing sequence:

Conventionally, the Purdey over-under will shoot the lower barrel first, but can be made to shoot the top barrel first if required.

### Extra barrels:

Purdey's can supply an extra pair of barrels of a different gauge for their guns, such as 28 gauge on a 20 gauge, and .410 on a 28 gauge. These guns are made with a single forend for both bores.



### Rib Types:

Ribs available for the Over & Under gun:-

- Ordinary solid game rib - flat top
- U.S.A. narrow rib - slope sided - flat top
- Elevated ventilated rib - as the ordinary solid rib but with vented sides

All ribs are the correct width proportion for the bore, and are tapered to give the illusion of length. Most ribs on Over-and-Unders are file-cut finish (*though hand matting is available*).

### Gun weight:

Weights of over-unders vary considerably depending on action shape, chambers, ribs etc. We can advise on the options so that finished weights comply with customers' requirements.

It should be noted that the basic price of Over & Under guns includes pistol grip, single trigger and the customer's choice of rib-type.

7	WEIGHTS OF GUNS	12 BORE	6lbs. 8oz. to 6lbs. 12oz.	16 BORE	6lbs. 2oz. to 6lbs. 8oz.	20 BORE	5lbs 15oz. to 6lbs. 6oz.	28 BORE	5lbs. 3oz. to 5lbs. 8oz.	.410 BORE	5lbs. to 5lbs. 4oz.
		10 bore on application	2.948 kilos to 3.061 kilos	2.778 kilos to 2.948 kilos	2.693 kilos to 2.891 kilos	2.353 kilos to 2.494 kilos	2.268 kilos to 2.381 kilos				

8	WEIGHTS OF GUNS	12 BORE	6lbs 14oz to 7lbs 4oz	16 BORE	6lbs 2oz to 6lbs 8oz	20 BORE	5lbs 14oz to 6lbs 6oz	28 BORE	5lbs 10oz to 6lbs	.410 BORE	5lbs 8oz to 6lbs
		3.572 kilos to 3.288 kilos	2.778 kilos to 2.948 kilos	2.664 kilos to 2.891 kilos	2.551 kilos to 2.721 kilos	2.494 kilos to 2.721 kilos					



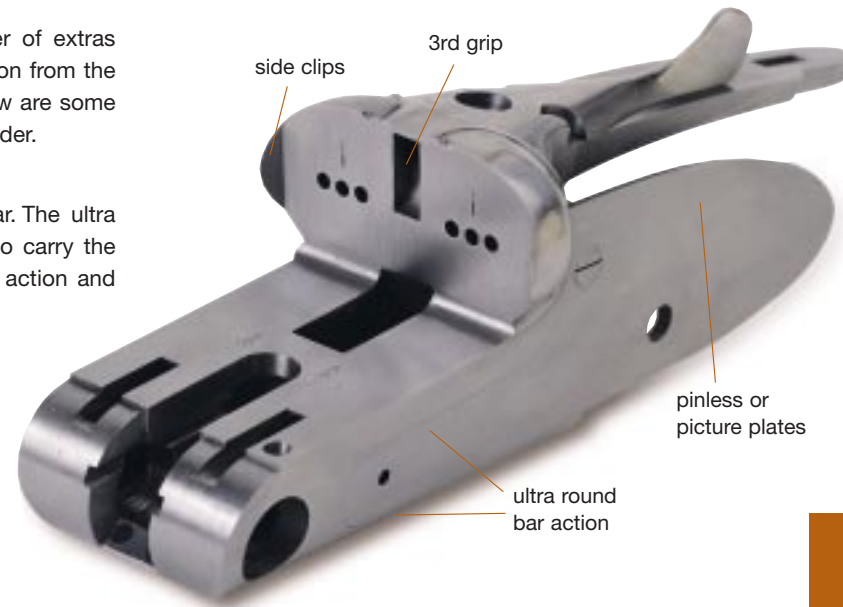


## EXTRAS FOR SIDE BY SIDE AND OVER & UNDER GUNS

Our price list shows the extensive number of extras available - and we will quote for any variation from the standard gun when an order is taken. Below are some of the options customers may wish to consider.

### Action shape:

Either square bar, round bar or ultra round bar. The ultra round bar action also has rounded locks to carry the completely rounded shape over the whole action and onto the shape of the stock.



### Third grip:

This is an additional fastening at the top of the standing breech and is available for 12, 16 and 20 gauge Side-by-Side guns. It is advised for guns which may shoot heavier loads.

### Side clips:

These afford additional lateral support to the barrels on the standing breech. Again associated with heavier guns.

### Heel Pads:

Heel pads are fitted either with plain rubber make off or leather covered. We can make heel pads to 5/8" minimum and this would add approximately 2 1/2oz to the weight of the gun. Toe & Heel pieces or full skeleton heel pads in metal are also available.

### Pistol grips:

These are designed according to the strength of the grip the shooter requires. The categories are: full pistol grip, half pistol grip, quarter pistol grip and POW (Prince of Wales grip).

Each category is available with either metal cap, ebony cap, plain wood or rounded make off.

### Safety:

This can be either automatic or non-automatic. The automatic safe is usually associated with game guns; the gun always returns to safe on opening. The non-automatic safe always has to be made safe by the shooter.

### Forends:

Purdey will make forends shaped to any requirement. The standard fitting is the splinter forend. Customers may specify the Beavertail forend which gives a strong grip for the front hand. It also keeps the fingers away from hot barrels.

### Single Trigger:

Customers may specify the Purdey single trigger, which is used on both Side-by-Side and Over & Under guns. It has a fixed firing sequence, firing right (sxs) or lower barrel (O/U) first.

### Spring bladed front trigger:

As illustrated on page 5, this is articulated to alleviate damage to the trigger finger on taking the second barrel.

### Beaded Edge to Bow of Guard:

Alleviates damage to the trigger finger that might be caused by the edge of the trigger bow.



Rounded pistol grip wood make off



Full pistol grip



Prince of Wales pistol grip or (P.O.W. grip)



## DOUBLE BARREL RIFLES



Double Barrel Rifle .577 NITRO

*The word "Express" was coined by James Purdey the younger to publicise his rifles. He likened their performance to a railway or "Express" train, which was heavy, travelled with great velocity and had a flat trajectory.*



Purdey make double express rifles on the Purdey Side-by-Side action.

We make the majority of our rifles in the following calibres, each on a dedicated action size: .375" H&H, .470" Nitro, .577" Nitro and .600" Nitro.

Customers who wish to have rifles built on other calibres are asked to approach us and advise us of their requirements, and we can then quote accordingly.

Weight also must be specified by the customer, since rifles can be made very much to the individual's requirements. Extras and options for rifles are broadly in line with those for side by side guns. (Please refer to our price list). Rifle prices do however include upper and lower strap extensions.

### Telescopic sights:

'Scope mountings may be specified and Purdeys can supply sights on request and quotation. Please see details overleaf. Other extras include folding front shroud covers, express sights at described yardages, front "moon" sight, bolted safety, gripcap with trap and sling swivels at 3/4" or 1".

CALIBRES Purdey make double rifles in the following calibres .375 / .470 / .577 & .600 bores







## BOLT-ACTION RIFLES



Classic Mauser '98 Action



Purdey's own large calibre action.



Purdey "Rail Mount" system with integral recoil bar.

### Telescopic sights & mounts on bolt rifles

Purdey fit fixed or removable mounts with or without open (iron) sights.

Purdey makes its own dedicated actions for bolt rifles in the following calibres: .375 H&H, .416/450 Rigby or other, .500 and .505 Gibbs.

The action length is suited to cartridge length in each calibre. We also stock Mauser Square Bridge and Mauser '98 actions and will engrave, regulate and finish them to customer's specifications.

### Rail Mount System:

This is Purdey's own system for big bolt rifles. It is very secure and facilitates fast on/off. Rings and mounts are all made with an integral recoil bar, from a single piece of steel. This system is recommended for our own actions and Mauser Square Bridge actions.

### Other systems:

Purdey will work with the customer to agree their best options and preferences for 'scope mounting' on their choice of rifle.



## ACCESSORIES, JOBBING & SECOND-HAND GUNS

### Gun Cases & Accessories

Gun cases and accessories from Purdey are available to order. Cases are fitted to guns and therefore built on completion of the gun.

Various shapes and weights of cases are available along with different colours for the leather and internal baize.

We recommend that a full range of fittings is included with each case, e.g. cleaning rod, jags, brushes, oil bottle, snap caps etc. Our cost for cases and fittings are charged at prices ruling when the gun is completed.



### Jobbing

Jobbing is the term given to the maintenance and repair of guns by Purdey. Purdey provide a complete jobbing service for both Purdey and other fine guns.

All repairs of breakages, fitting of new barrels and stocks etc are undertaken, as well as routine maintenance, cleaning and polishing.

Purdey will be pleased to provide estimates for any work that is considered necessary. Such estimates are based on the 'Best Condition' principle, that is to say, we estimate to put the gun into the best possible condition for a gun of its age.

Only the same Purdey craftsmen who build new guns are entrusted with jobbing, so customers may be assured of work to the highest standard.

### Storage

Purdey have a comprehensive storage facility in South Audley Street. We offer secure storage with insurance cover. Guns are insured for their current replacement value.



### Maintenance

We do advise that guns in regular use are checked over by Purdey each season or so. If guns are stripped and cleaned routinely by us, their condition will be guaranteed.

Purdey are happy to provide maintenance tips for the upkeep of stocks and guns in general, i.e. the use of linseed oil on stocks, cleaning of barrels and the oiling of guns.



### Second Hand Guns

Purdey are always pleased to make offers for the purchase of good second-hand guns. Consistent with our reputation, we deal only in what we consider to be guns in the best condition. To this end, we have a stock of second-hand guns on inventory for immediate delivery.





# ENGRAVING

Purdey can offer all levels of engraving from standard fine, through large scroll and large scroll with game scenes to carved and gold inlaid work.

*Large scroll and game scene engraving on a 20 bore Over & Under gun.*



*Standard fine rose & scroll engraving with gold naming and case hardened finish.*

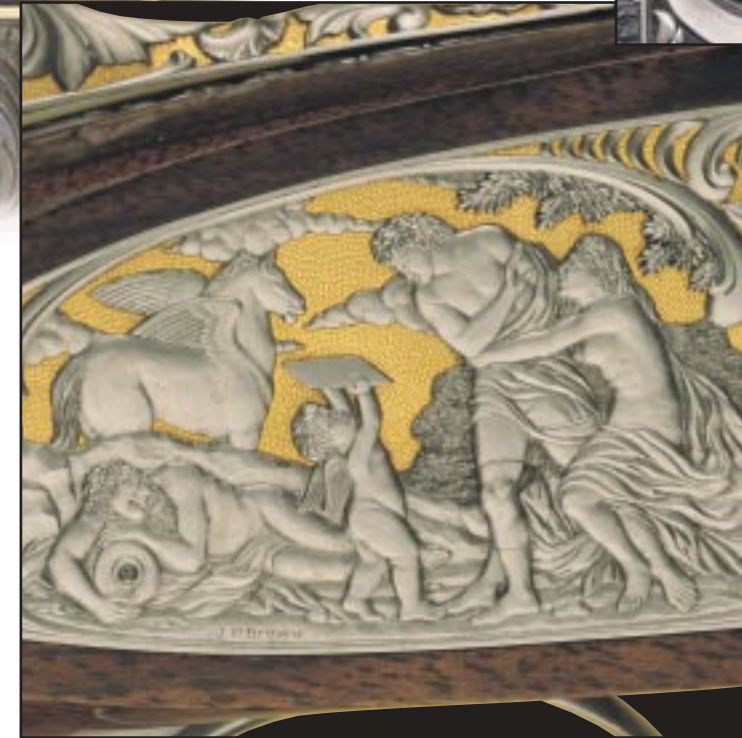
*Large scroll engraved on ultra round bar action with carved breech ends.*



*Multi coloured gold inlaid scroll work and game scenes.*



*Fully carved breech end.*



*Fully carved action with gold inlaid background*

### Purdey Standard Fine

Purdey standard fine engraving is the most commonly used on all our new guns. The pattern and design is closely associated with the Purdey gun and has been employed by us for many generations.

This type of engraving, sometimes known as 'Rose and Scroll' is done entirely by hand, and, as mentioned above, is included in the basic price of the gun.

### Purdey Extra Finish

James Purdey has always had a tradition of producing extra finished guns. They are invariably produced to the customer's specification. Designs for scrolls, whether belted or leaf pattern, devices of ornament and inlays, all can be selected. These may include game scenes of birds and animals.

We are always pleased to receive art work from which to design scroll work and game scenes.

Purdey also have an extensive portfolio of gun photographs from which designs may be extracted.

We have a good range of engravers who work exclusively for Purdey, and who can provide all levels of engraving that clients wish to commission.

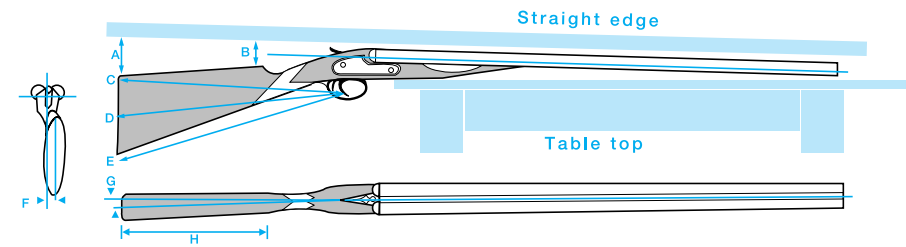
We are happy to work with clients on their designs, to advise on specific engravers, and to match their requirements to the availability of engravers both in England and abroad, and then provide estimates of cost and delivery times.







# PHYSICAL DIMENSION CHART & SPECIFICATION CHART



### ORDERING A PURDEY GUN

When ordering, customers should specify their guns in accordance with their particular shooting needs i.e pheasant, grouse, quail, duck, upland game etc. Different pursuits might require different specifications such as barrel length, chokes, stock length, cast etc.

Naturally Purdey will be pleased to advise customers on any aspect of ordering their gun or guns.

Our primary requirements to start the making of a gun are signalled by an asterisk (\*) on Purdey's Specification Chart opposite.

These factors allow us to get to the actioning stage of manufacture; all other particulars can be given in due course.

We advise that measurements are taken for the gun(s) stock dimensions at a shooting school using a "try gun". We can readily arrange this for you here in London. We also have accredited instructors abroad who we can recommend.

We can also take measurements using our "Electric try gun" in our Audley Street premises.

To initiate the building of a gun, we require a deposit of one third of the basic price of the gun as per our current price list. A second one third payment will be asked for at the actioning stage and balance prior to delivery. Delivery times will be quoted on ordering.

For further details or advice, please do not hesitate to contact us by post, by telephone or fax, or at our internet address.



IF YOU WOULD LIKE TO ORDER ONE OR MORE PURDEY GUNS, PLEASE GIVE THE MINIMUM INFORMATION REQUIRED IN ORDER FOR US TO COMMENCE WORK, AS INDICATED BY THE SECTIONS MARKED ( \* )

* RIGHT HANDED <input type="checkbox"/>	LEFT HANDED <input type="checkbox"/>			
* SIDE BY SIDE <input type="checkbox"/>	OVER & UNDER <input type="checkbox"/>			
* 12 GAUGE <input type="checkbox"/>	20 GAUGE <input type="checkbox"/>	28 GAUGE <input type="checkbox"/>	OTHER .....	
* CHAMBER SIZE STANDARD (23/4") <input type="checkbox"/>	OTHER .....			
* BARREL LENGTH (INCHES / CMS) .....				
* SINGLE TRIGGER <input type="checkbox"/>	DOUBLE TRIGGER <input type="checkbox"/>	SPRING-BLADED FRONT TRIGGER <input type="checkbox"/>		
* RIGHT (OR BOTTOM) CHOKE .....				
* LEFT (OR TOP) CHOKE .....				
* RIB TYPE .....				
PLAIN FINISH <input type="checkbox"/>	MATTED FINISH <input type="checkbox"/>	FILE CUT (O/U ONLY) <input type="checkbox"/>		
* ORDINARY BAR ACTION <input type="checkbox"/>	ROUND BAR ACTION <input type="checkbox"/>	ULTRA ROUND BAR ACTION <input type="checkbox"/>		
* THIRD GRIP <input type="checkbox"/>	CLIP SIDES <input type="checkbox"/>	PINLESS LOCK PLATES <input type="checkbox"/>		
STANDARD FINE ENGRAVING <input type="checkbox"/>	EXTRA FINISH <input type="checkbox"/>	OTHER .....		
GOLD PURDEY NAMING INLAID ON LOCKS <input type="checkbox"/>	GOLD PURDEY NAMING INLAID ON UNDERSIDE <input type="checkbox"/>			
GOLD SAFE INLAID <input type="checkbox"/>	PLAIN SAFE ( NO GOLD INLAY) <input type="checkbox"/>	GOLD '1' & '2' ON PAIR <input type="checkbox"/>		
* AUTOMATIC SAFE <input type="checkbox"/>	NON-AUTOMATIC SAFE <input type="checkbox"/>			
PACK-HARDENED CASE COLOUR FINISH <input type="checkbox"/>	SILVER FINISH (CYANIDE HARDENED) <input type="checkbox"/>			
BEADED EDGE TO TRIGGER BOW <input type="checkbox"/>	GILDED TRIGGER <input type="checkbox"/>	GILDED INTERNAL MECHANISMS <input type="checkbox"/>		
PISTOL GRIP TO STOCK; TYPE OF GRIP .....	METAL CAP <input type="checkbox"/>			
SILVERS RUBBER HEEL PAD: PLAIN <input type="checkbox"/>	LEATHER COVERED HEEL PAD <input type="checkbox"/>			
SPLINTER FOREND <input type="checkbox"/>	BEAVERTAIL FOREND <input type="checkbox"/>			
GOLD OVAL <input type="checkbox"/>	SILVER OVAL <input type="checkbox"/>	GOLD INLAID LETTERS <input type="checkbox"/>	SILVER INLAID LETTERS <input type="checkbox"/>	INITIALS .....
INLAID MONOGRAM OR CREST IN STOCK <input type="checkbox"/>		MONOGRAM OR CREST ENGRAVED ON OVAL <input type="checkbox"/>		
TOE AND HEEL PIECES <input type="checkbox"/>	SKELETON HEEL PLATE <input type="checkbox"/>			
CUSTOMER TO SELECT WOOD BLANK(S) <input type="checkbox"/>	PURDEY TO SELECT WOOD BLANK(S) <input type="checkbox"/>			
* EXTRA BARRELS: LENGTH ..... CHOKE RIGHT (SXS) BOTTOM (O/U)..... CHOKE LEFT (SXS) TOP (O/U) .....				
MEASUREMENTS AS PER ILLUSTRATION IF KNOWN: LENGTH D..... C..... E.....				
CAST G ..... F .....				
BEND A ..... B .....				





**JAMES PURDEY & SONS**  
(INCORPORATING JAMES WOODWARD & SONS)

AUDLEY HOUSE, 57-58 SOUTH AUDLEY STREET, LONDON. W1K 2ED  
TEL: +44 (0)20 7499 1801/5292      Fax: +44 (0)20 7355 3297

EMAIL: [enquiries@james-purdey.co.uk](mailto:enquiries@james-purdey.co.uk)  
WEBSITE: [www.purdey.com](http://www.purdey.com)